

## **INSTALLING SCS.1 DAROUTER IN WINDOWS**

The Stanton SCS.1 DaRouter software serves a couple different purposes. First, it's the "engine" that allows communication between the SCS.1 hardware and your performance software. DaRouter also allows users to reconfigure the layout of their SCS.1 controller with the use of "presets". Presets typically end with the .btme extension, and can be found in the Stanton SCS.1 DaRouter folder on your computer.

## THE INSTALLATION PROCESS

- (1) Download the DaRouter software. It can be found on our website at <http://www.stantondj.com/v2/index.asp>.
- (2) Once downloaded and unzipped, run the installer. Your first window will likely be a security warning similar to this one...

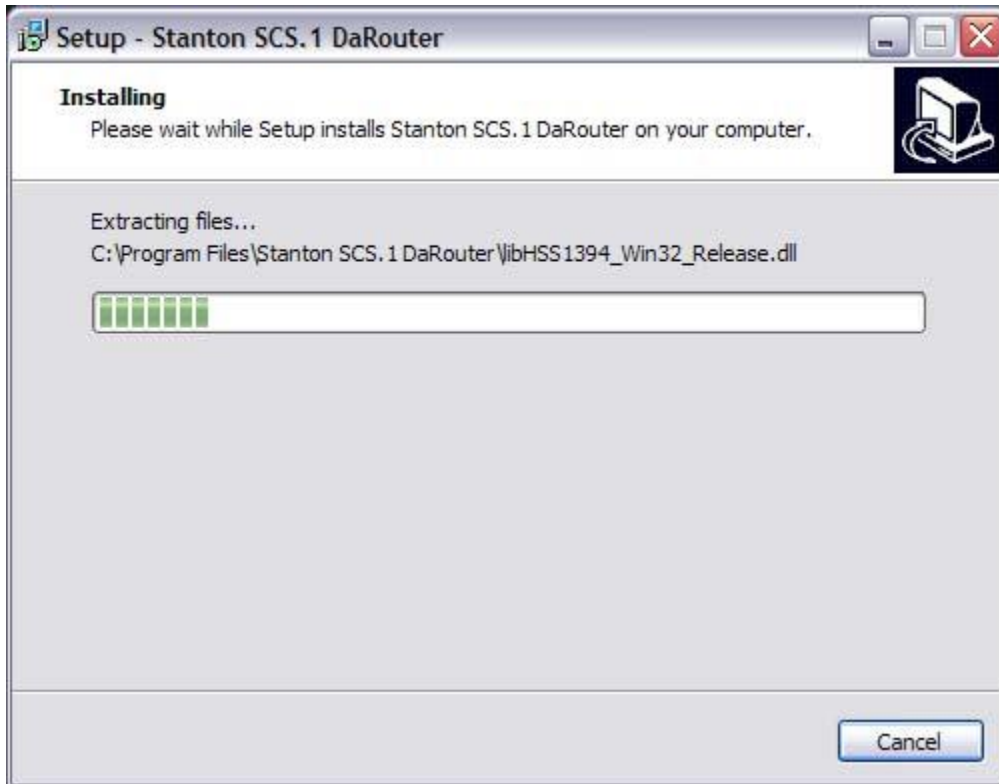


Click the RUN button to proceed.

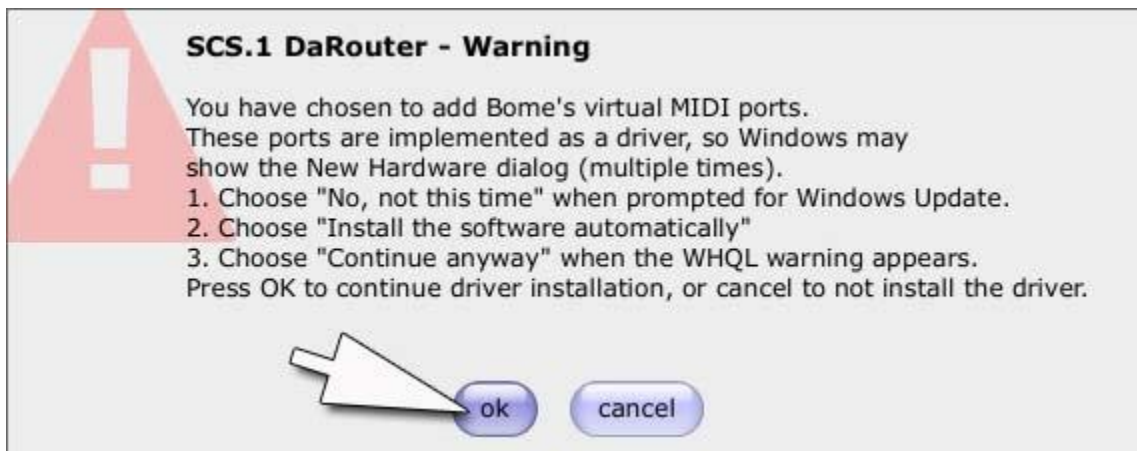
- (3) This will open the installer. You'll be greeted with a welcome message. Press NEXT to continue.
- (4) The next page specifies the installation type. Select the STANDARD option. Please only use the CUSTOM option if prompted to do so by customer service, or if you have verified an installation problem with your virtual MIDI drivers from a previous install.

(5) Next is the License Agreement. Click the "I ACCEPT THE AGREEMENT" option, then press NEXT.

(6) Installation will now begin.



(7) After the installation is finished, you'll be presented with a different looking window asking you to install a driver.



Press OK on this window and the 2 Bomes Virtual MIDI ports will be installed. These are critical to the DaRouter installation, so be sure to answer OK.

(8) After clicking OK, wait a few seconds and you'll be prompted by your OS that a device has been found.



(9) Shortly after, a driver installation dialog will open like this...



Click the option "No, not this time", then press NEXT.

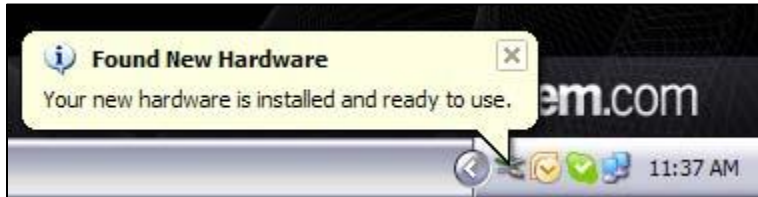
(10) The Found New Hardware Wizard will open and identify the Bome's Virtual driver. Click the option "Install the software automatically (Recommended)"



Click NEXT to continue.

(11) At this point, the driver software will be installed. When done, you'll be notified of the completion of the driver installation. Press FINISH.

**PLEASE NOTE** - There are 2 Bome's Virtual MIDI Port Devices. When the first one finishes installing, wait a few seconds and you'll see a new dialog open like the one in step 8. Repeat steps 8-11 for the second driver and you'll be prompted that the drivers are installed.



(13) Press FINISH on the last window and your installation of the Stanton SCS.1 DaRouter will be done.

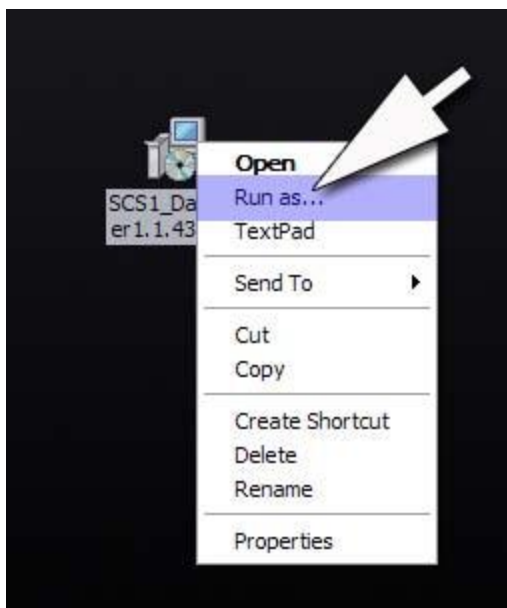


## TROUBLESHOOTING

Because this installer installs not only software, but a driver, it sometimes gets flagged by antivirus software and/or the user policies on your Windows computer. Here are some steps that can help in this situation.

If you have problems with your installation, disable or temporarily turn off your antivirus software. Some AV software is extremely intrusive, and hinders even legitimate programs from installing the files they need. It's always a good idea to turn off your AV software on any installation, but it can be especially true with our DaRouter software.

There can be problems with this installation if the user logged into the computer doesn't have administrator rights. Sometimes even if the logged in user is a Power User or Administrator, there are instances where they still don't have total rights of administration. A way around this is to utilize the "Run As" option. Instead of double clicking on the installer to run it, right click the executable instead and select "Run As..." instead.



This will allow you to run as another user for this installation only. Select Administrator, and supply the admin password.

If you continue to have problems with your DaRouter installation, contact Stanton support.

## HELP

We hope that this help document gives you all the information you need to get up and running. If you have any additional questions, please feel free contact our Customer Support Monday through Friday at +1 954.316.1500 from 9AM to 6PM EST.

We also have a lot of great information on our forums...

<http://forums.stantondj.com/>

And be sure to check our Knowledge Base for answers to common issues and questions.

<http://www.stantondj.com/activekb/>

## LEGAL

Windows is a registered trademark of Microsoft Corporation in the United States and other countries

OSX is a registered trademark of Apple Inc.