

UPDATING YOUR SCS.1 FIRMWARE

You can think of firmware as the software that runs on a device, telling it how to operate. Having updated firmware is important, because developers often update it to address bugs or add new functionality. On the SCS.1 controllers, the current firmware version can be found by powering on your controllers and pressing the SETUP button. Once pressed, the LCDs will report the firmware version. The latest firmware versions are...

SCS.1m – MIXER VERSION 1.01D (1.24)

SCS.1d – DECK VERSION 1.01G (1.27)

If your SCS.1 controller reports these versions, then you do not need to update. If not, you'll need to flash your firmware.

A WORD OF CAUTION BEFORE YOU BEGIN

Flashing your firmware should always be done with caution. Do not flash units that report a current version. There is a possibility that something can go wrong during the flash process and cause your controller to not work. When flashing an SCS.1 controller, take the following steps to make sure you get a solid flash.

- (1) Use a high quality firewire cable between the computer and controller.
- (2) If possible, flash using a laptop or desktop with USP (battery) backup.
- (3) Connect and attempt to flash only one device at a time.
- (4) Proceed slowly, and read all prompts. Do not click blindly through the process.
- (5) Follow all on-screen instructions and don't take shortcuts.

Typically, even if you get a bad flash, the unit can be re-flashed and made to work again. But you will need to contact support to remedy a bad flash.

UPDATE INSTRUCTIONS

First, you'll need to download the firmware flasher. It's available from our website at <http://www.enterthesystem.com/scs1/index.php> . There are 2 versions, one for OSX and one for Windows.

Once you've downloaded the appropriate update software, unzip it. Please do not try to run it out of the zip archive.

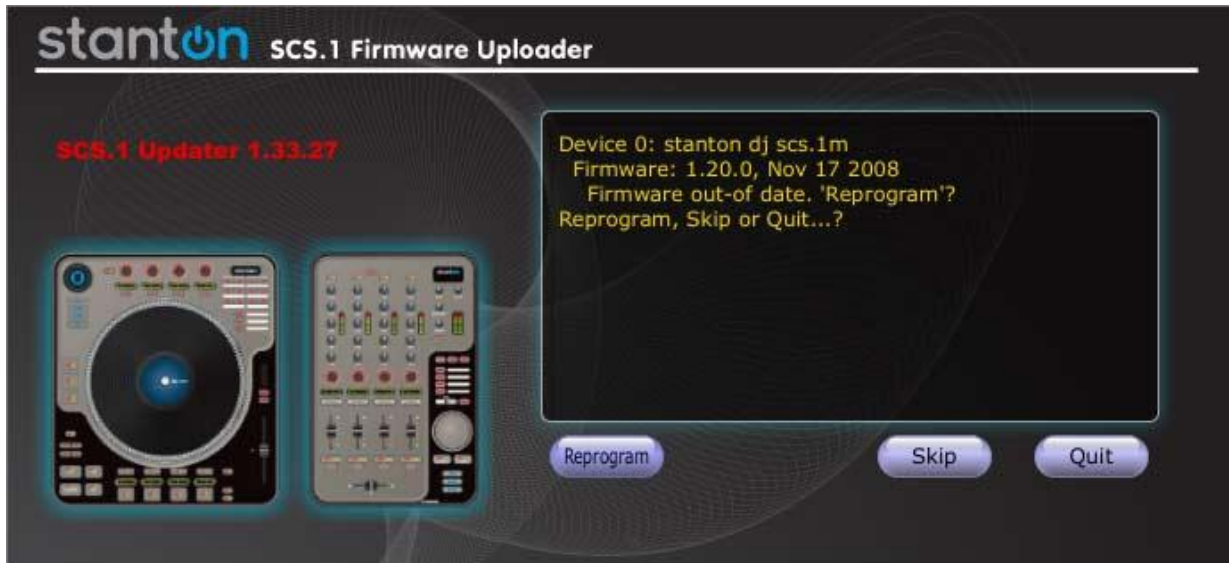
Now connect a single SCS.1 controller to your computer. Make sure the power is off on the controller while you're making the connection.

Once all connections are made, turn the power on. If any prompts appear for a driver (Windows), please hit CANCEL on them. We'll worry about the drivers later.

Run the firmware flash software. You should see a screen similar to this...

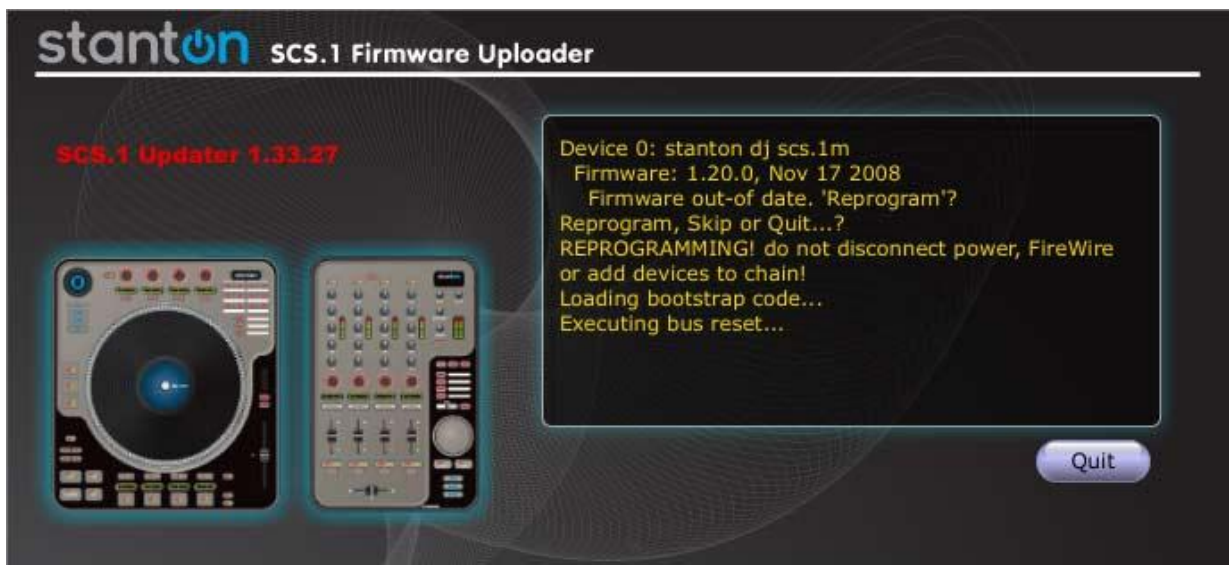


Press the SCAN button.



As you can see, in this example, I have an SCS.1m connected – and it's out of date. If the firmware version was current, it would have told me that firmware was current and reprogramming was not needed. Since the device I have is out of date, I'll hit the REPROGRAM button.

When the firmware is being reprogrammed, you'll see data scrolling in the large window in the flash software. Here is an example of some of the screens shown during a normal successful firmware flash.





Once the flash process is complete, you'll get a screen similar to the one above. You might also notice that the lights on your SCS.1 controller may have gone dark. This is normal. Press QUIT to close the flash software.

When the lights on the unit come back on, power the unit off and disconnect the power cable. Wait 10 seconds and re-connect the power, then power the unit back on. If the unit is dark and only the "ON" in the Stanton logo is lit, don't panic. Just wait and it should return to normal operation in a minute or so.

Once the unit returns to normal operation, press the SET UP button and verify that the device firmware is now correctly updated.

The firmware flashing process is now complete. If needed, repeat this process for any remaining SCS.1 controllers you have.

HELP

We hope that this help document gives you all the information you need to get up and running. If you have any additional questions, please feel free contact our Customer Support Monday through Friday at +1 954.316.1500 from 9AM to 6PM EST.

We also have a lot of great information on our forums...

<http://forums.stantondj.com/>

And be sure to check our Knowledge Base for answers to common issues and questions.

<http://www.stantondj.com/activekb/>

LEGAL

Windows is a registered trademark of Microsoft Corporation in the United States and other countries

OSX is a registered trademark of Apple Inc.