

THE SCS1 ASIO DRIVER (WINDOWS ONLY)

Before we begin, please note that this is a Windows only component. This driver is compatible with both 32 and 64bit versions of the Windows operating system (XP, Vista, and 7). This ASIO driver not only enables audio for the SCS.1m, it also is responsible for proper device detection for BOTH SCS.1 devices. That means it's important to have installed even if you don't have an SCS.1m.

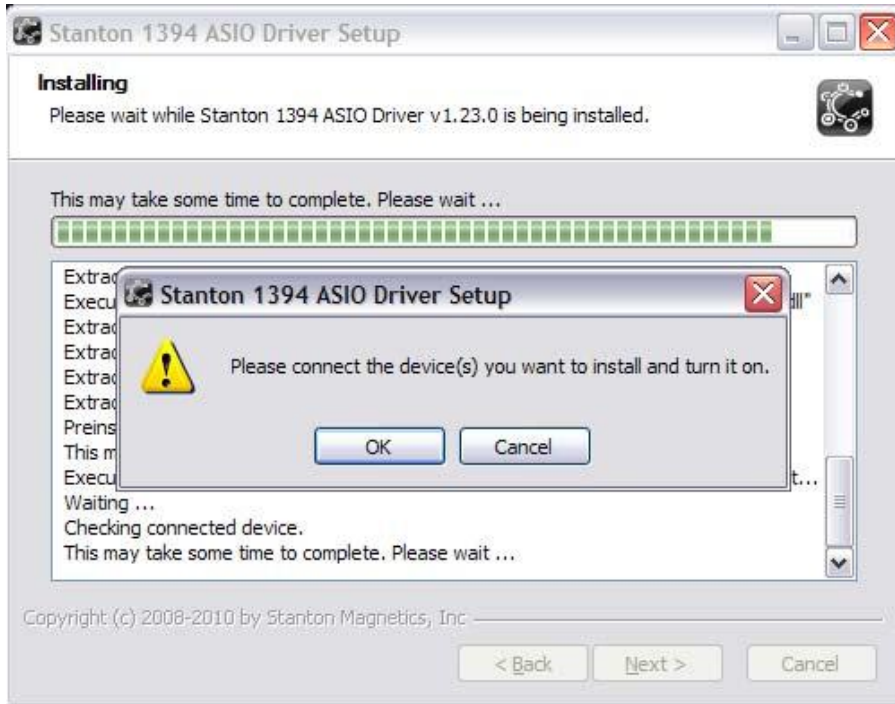
INSTALLING THE DRIVER

- (1) Download the SCS1 ASIO driver and put the installer file somewhere you'll have access to later if needed (like in My Documents for instance).
- (2) Connect ALL of your SCS.1 controllers to the computer. Make sure that all power and Firewire connections are made. Turn POWER OFF on all SCS.1 devices, but keep them connected to the computer.
- (3) Double click the installer to run it.

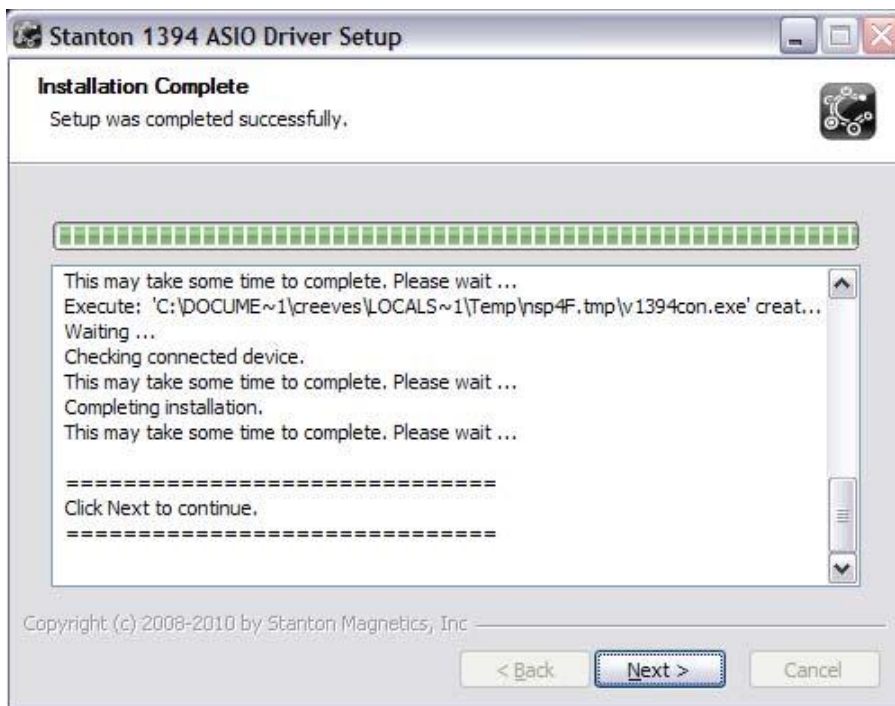


- (4) On the next page the installer will ask you for an install location. Leave it at default and press the INSTALL button.
- (5) The installer will begin to install the necessary files on your computer. If you are prompted to disconnect device(s), please make sure all SCS.1 controllers are turned off.

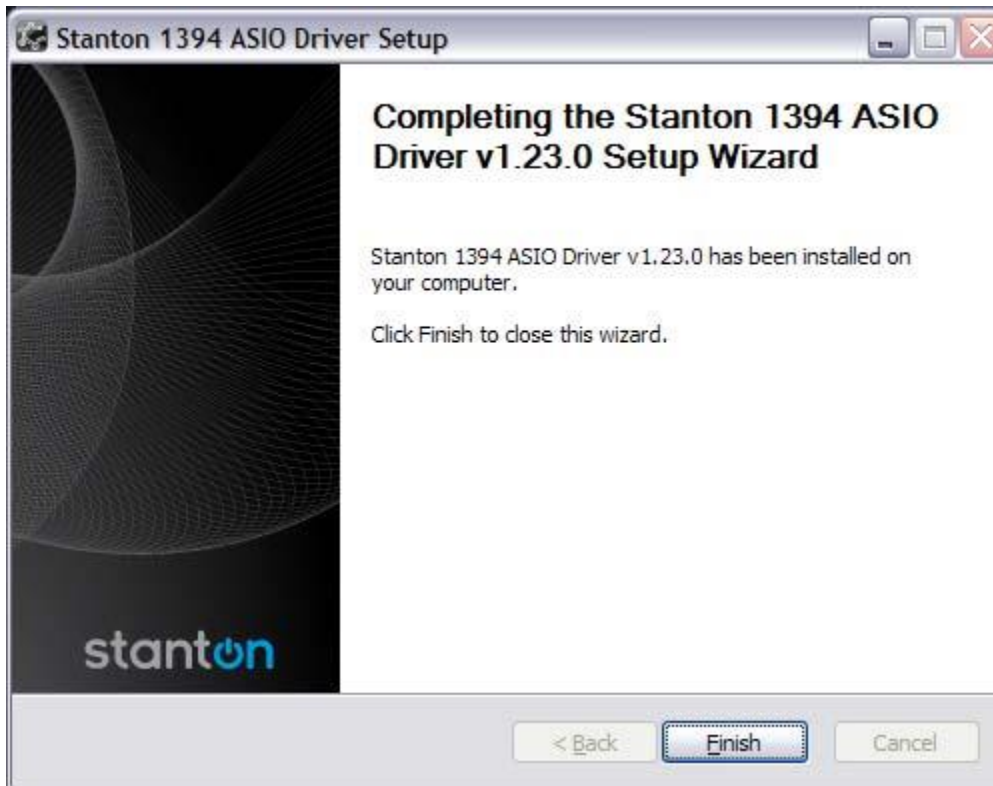
(6) You will be asked by the installer to connect your devices and turn them on. Do so now, and then press OK.



(7) Drivers for your SCS.1 devices will be installed, and you will notice device detection dialogs pop up in the bottom right corner of the screen. This is normal. Once properly installed, you will be notified that installation is complete. Press NEXT to continue.



(8) The ASIO driver will indicate that it's finished and installation is complete.



Your SCS.1 controllers should now be correctly installed.

HELP

We hope that this help document gives you all the information you need to get up and running. If you have any additional questions, please feel free contact our Customer Support Monday through Friday at +1 954.316.1500 from 9AM to 6PM EST.

We also have a lot of great information on our forums...

<http://forums.stantondj.com/>

And be sure to check our Knowledge Base for answers to common issues and questions.

<http://www.stantondj.com/activekb/>

LEGAL

Windows is a registered trademark of Microsoft Corporation in the United States and other countries

OSX is a registered trademark of Apple Inc.